

Spectra Cube Tape Library



Designed for ease of use

The [Spectra Cube™](#) tape library is a versatile, cost-effective solution to retain petabytes of long-term data in on-prem, hybrid cloud, or IaaS environments. The Spectra Cube library delivers enterprise-class reliability, is easy to deploy and manage, is serviceable by administrative staff without tools, and scales capacity and performance on demand. It helps organizations confidently and cost-effectively preserve, protect, and defend their data at scale.



Easy to Deploy and Manage



- Securely manage via touch panel, remote devices or REST API
- Replace common components in less than 5 minutes without tools or downtime

Flexible Integration



- Supports half- and full-height LTO tape drives and multiple tape drive generations
- Adapts to any environment; supports Fibre Channel, SAS, and Ethernet connectivity¹

Easy to Scale



- Starts small and expands up to 1,670 slots and 66 petabytes of native capacity
- Grows capacity and performance seamlessly without disrupting operations

Resource Efficiency



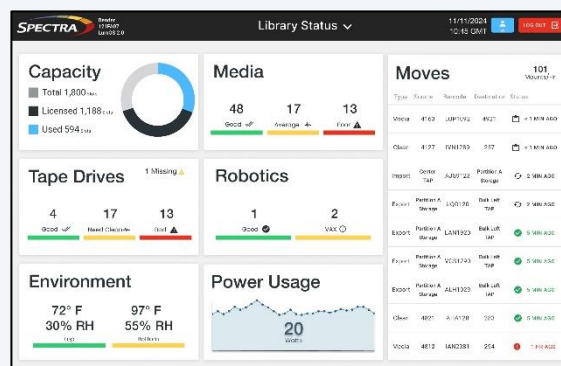
- Minimizes floor space with optimal data density
- Reduces energy consumption and CO² emissions with 95% energy-efficient power supplies

Efficient Library Management

Spectra Cube libraries feature [LumOS library management software](#), which provides an intuitive and feature rich user experience.

LumOS software delivers:

- A fast, efficient, and intuitive user interface
- Streamlined system configuration, monitoring, and metrics
- Security updates with each release



LumOS Library Management Software

¹Ethernet connectivity requires an optional Ethernet-to-SAS bridge.

Spectra Cube Library Overview

Capacity on Demand

Organizations can start with a minimal configuration and expand storage capacity as needed, helping optimize initial investments, and reduce upfront costs. Adding tape slots via software activation avoids expensive hardware changes or downtime, offering a seamless, dynamic solution to support rapidly growing volumes of data.

Preserve Your Storage Investment

The Spectra Cube library delivers lifetime investment protection, making capacity and performance upgrades quick, seamless, and economical. Migration of existing tape drives and media from Spectra or other libraries is supported, ensuring maximum preservation of previous capital investments.

Data Integrity Assurance

When using [Spectra Certified Media](#), exclusive Data Integrity Verification and Media Lifecycle Management features are enabled in LumOS library management software to reduce the risk of media failure or loss. All Spectra Certified Media is delivered ready for peak performance, continuously monitored for quality, and comes with a Lifetime Media Guarantee.

Storage Investment Protection

The Spectra Cube tape library supports a comprehensive LTO technology roadmap to ensure long-term investment protection, with the ability to readily capitalize on future increases in capacity and performance while maintaining the ability to use existing drives and media for many years to come.



Spectra Cube Specifications

Max. Media / Slots	Max. Native Capacity	Max. Compressed Capacity ¹	Max. Drives ²	Max. Native Throughput (TB/hr.)	Max. SLS Partitions	Tape Drives Supported	Dimensions H x W x D
1,670	66.8 PB	167.0 PB	30 HH 16 FH	32.4 HH 23.0 FH	16	LTO-10, LTO-9 LTO-8, LTO-7 LTO-6	42U standalone frame: 201.7 x 91.2 x 115.3 cm (79.4 x 35.9 x 45.4 in)

¹ Compression ratio for LTO is 2.5:1.

² Half-height (HH) drives support Fibre Channel and SAS. Full-height (FH) LTO tape drives support Fibre Channel (also SAS for LTO-9).

Allowable and Recommended Environment

	Dry-bulb Temperature	Maximum Temperature Rate of Change	Relative Humidity (non-condensing)	Maximum Humidity Rate of Change	Altitude (max)
Allowable	16°C to 32°C (60°F to 90°F)	5°C per hour 9°F per hour	20% to 80% 22°C dew point max	5% per hour with no condensation	3,048 m (10,000 ft)
Recommend	16°C to 25°C (60°F to 77°F)	5°C per hour 9°F per hour	20% to 50% 22°C dew point max	5% per hour with no condensation	3,048 m (10,000 ft)

Summary

The Spectra Cube Tape Library is a scalable and efficient solution for enterprise data protection and long-term retention. With modular expansion, intuitive LumOS management software, and energy-efficient design, Cube provides high reliability, low cost of ownership, and sustainable data preservation at scale.

Ideal For

Organizations seeking a high-capacity, modular, and energy-efficient tape library for long-term data retention and backup. Perfect for enterprises managing growing data volumes that need affordable scalability, simple serviceability, and investment protection.

About Spectra Logic Corporation

Spectra Logic modernizes IT infrastructures to preserve, protect and defend data, from days to decades, whether on-premises, in a single cloud, across multiple clouds or in all locations at once. Our cost-effective solutions help organizations efficiently manage, migrate and store long-term data, from terabytes to exabytes, with features that make it ransomware resilient.